

Tawhai School News

Week 5 Term 2!



Monday 26 May 2025

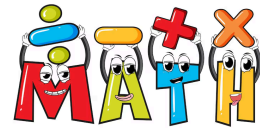
Kia ora e te whānau

It's hard to believe we're already into Week 5, this term is certainly flying by! There's a real buzz of excitement around the school as we look ahead to some very special events on the horizon. Planning is well underway for our Matariki celebrations, which promise to be a wonderful time for reflection, connection, and community. We're also eagerly anticipating the official opening of our newly refreshed library – watch this space for more details!

A huge thank you to everyone who supported our Book Sale last week. Thanks to your generosity and enthusiasm, we managed to raise \$1,500 which will go directly towards camp.

IMPORTANT REMINDERS

1. THIS FRIDAY (30 MAY) IS TEACHER ONLY DAY



WE HAVE A MATHS FACILITATOR DELIVERING A WORKSHOP ON THE NEW MATHS CURRICULUM FOR OUR TEACHERS AND WILL BE JOINED BY PINEHAVEN TEACHERS.

PLEASE MAKE ALTERNATIVE ARRANGEMENTS FOR YOUR CHILD'S CARE.

2. MONDAY 2 JUNE IS A PUBLIC HOLIDAY



KING'S BIRTHDAY

Have any of your contact details changed?

If you (or your emergency contacts) have had any changes in email addresses, phone numbers, or physical addresses, can you please pop into the office or email Kelly admin@tawhai.school.nz.

It is really important we have the correct details, particularly in the case of an emergency.

Naenae College Enrolment Scheme

Here is a link if you would like to provide feedback on the proposed Naenae College enrolment scheme

Naenae College

<https://www.education.govt.nz/have-your-say/naenae-college-proposed-new-enrolment-scheme/details>

From the PTSG

Thank you for supporting the sausage sizzle fundraiser on Friday! And a big thanks to our wonderful group of volunteers!
The next PTSG hui is on Wednesday 5 June.



School Docs

We welcome you to participate in the policy reviews for this term.

Pop on the link and follow the review instructions [School docs](#)

Username : tawhai

Password: empowering



- Tuesday 27 May - School Board Hui 6pm
- **Friday 30 May - Teacher Only Day, Maths Curriculum**
- Monday 2 June - King's Birthday, [Public Holiday]
- Tuesday 10 June Whānau hui - more details to come
 - Friday 13 June - Library Opening
 - Thursday 19 June - Matariki Celebrations
 - Friday 20 June - Matariki (Public Holiday)
 - Friday 27 June - End of Term 2
 - Monday 14 July - Beginning of Term 3



Clearing the path
to a positive future
Para he huarahi ki te ora



Connect With Us ...

The UHub space is open:
Mondays 9:30am - 4.00pm

The Learning Centre,
Fergusson Drive,
Upper Hutt City Library.

All Welcome - No Cost

office@uhub.org.nz

/UhubUpperHutt

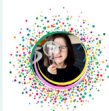
/uhubupperhutt/



★ Understanding Challenging Behaviour

Join us for a special session with Emma Hodgson from Positive Pathways! Exploring gentle, practical strategies to support tamariki who may strongly resist everyday demands, experience BIG emotional responses, or shut down when overwhelmed.

This session gently draws on insights often associated with Pathological Demand Avoidance (PDA)—a profile recognised within the autism spectrum—while embracing a neuroaffirming approach that honours each child's unique needs and strengths.



★ All Kinds of Minds - Notice, Recognise, & Respond

Following on from our popular ADHD-focused sessions, this term we're diving deeper into neuroaffirming tools and strategies to help us notice, recognise, and respond to the unique needs of tamariki.

Whether you're supporting tamariki at home or in the classroom, come and explore practical, strengths-based ways to create safe, connected environments where all kinds of minds can thrive. Led by Shelley — experienced RTLB, — this session will leave you feeling encouraged and equipped to support neurodivergent tamariki with confidence and care.

Book your
spot now!

www.uhub.org.nz

UHub
Invites
You to ...

Our 'Empower U' Sessions:

Term 2, 2025

Our 'Empower U' Sessions are one hour long and are designed for parents, grandparents, caregivers, along with Educators. All welcome, at no cost!

Whānau Focus Sessions:

Monday 26 May: 1pm - 2pm

Venue: The Learning Centre,
Upper Hutt City Library, Fergusson Drive

Or

Thursday 29 May: 7pm - 8pm

Venue: The Learning Centre,
Upper Hutt City Library, Fergusson Drive

Educator Focus Session:

Wednesday 28 May: 3.30pm - 4.30pm

Venue: The Learning Centre,
Upper Hutt City Library, Fergusson Drive

Whānau Focus Sessions:

Monday 9 June: 1pm - 2pm

Venue: The Learning Centre,
Upper Hutt City Library, Fergusson Drive

Or

Thursday 12 June: 7pm - 8pm

Venue: The Learning Centre,
Upper Hutt City Library, Fergusson Drive

Educator Focus Session:

Wednesday 4 June: 3.30pm - 4.30pm

Venue: The Learning Centre,
Upper Hutt City Library, Fergusson Drive



Ngā mihi nui,
The Tawhai School Team